

# IP DUAL SENSOR THERMAL PTZ CAMERA



## ENC-HPT8Z-30X-05

### FEATURES

- 640x512 Uncooled Infrared Detector
- Sensitivity  $\leq 35\text{mK}$
- 9 / 13 / 25 mm Fixed Thermal Lens
- 12 $\mu\text{m}$  Uncooled Infrared Detector
- Real-time Fire Detection
- Durable Lightweight Aluminum Alloy Housing
- Wide 10~24V DC Input for Flexible Power Compatibility
- Electronic Image Stabilization
- 20 Color Patterns Support
- IP66



### SPECIFICATION

MODEL	Model No.	ENC-HPT8Z-30X-05
	Type	IP DUAL SENSOR THERMAL PTZ CAMERA
THERMAL CAMERA	Detector Type	Uncooled VOx Focal Plane Arrays
	Effective Pixels	640x512
	Pixel Size	12 $\mu\text{m}$
	Thermal Sensitivity (NETD)	$\leq 35\text{ mK}$ (@25°C, F1.0, 25Hz)
	Spectral Range	8 ~ 14 $\mu\text{m}$
	Spatial Resolution	1.32 mrad / 0.92 mrad / 0.48 mrad
	Image Settings	Brightness, Sharpness, Contrast, 2D/3D DNR, Mirror / Flip, FFC
	Color Palettes	White & Black Hot, Ironbow, Rainbow etc up to 20 modes
THERMAL LENS	Lens	Fixed
	Focus Control	Auto / Manual
	Focal Length	9 / 13 / 25 mm
	F No	F1.0
	Digital Zoom	8x
	Angle of View (H)	48.0° / 33.0° / 17.0°
	Angle of View (V)	38.0° / 26.0° / 14.0°
	Angle of View (D)	61.2° / 42.0° / 22.0°
	Detection	9 mm: Human (1.8x0.5 m) - 379 m, Vehicle (1.4x4.0 m) - 1163 m 13 mm: Human (1.8x0.5 m) - 542 m, Vehicle (1.4x4.0 m) - 1661 m 25 mm: Human (1.8x0.5 m) - 1042 m, Vehicle (1.4x4.0 m) - 3194 m
	Recognition	9 mm: Human (1.8x0.5 m) - 95 m, Vehicle (1.4x4.0 m) - 291 m 13 mm: Human (1.8x0.5 m) - 135 m, Vehicle (1.4x4.0 m) - 415 m 25 mm: Human (1.8x0.5 m) - 260 m, Vehicle (1.4x4.0 m) - 799 m
	Identification	9 mm: Human (1.8x0.5 m) - 47 m, Vehicle (1.4x4.0 m) - 145 m 13 mm: Human (1.8x0.5 m) - 68 m, Vehicle (1.4x4.0 m) - 208 m 25 mm: Human (1.8x0.5 m) - 130 m, Vehicle (1.4x4.0 m) - 399 m
	Fire Detection	9 mm: Fire size (2.0mx2.0m) - 800 m, Fire (1.0mx1.0m) - 400 m 13 mm: Fire size (2.0mx2.0m) - 1100 m, Fire (1.0mx1.0m) - 550 m 25 mm: Fire size (2.0mx2.0m) - 2100 m, Fire (1.0mx1.0m) - 1050 m

★Product specification and availability are subject to change without notice.

# IP DUAL SENSOR THERMAL PTZ CAMERA



## ENC-HPT8Z-30X-05

MODEL	Model No.	ENC-HPT8Z-30X-05
	Type	IP DUAL SENSOR THERMAL PTZ CAMERA
VISIBLE CAMERA	Image Sensor	1/2.8" CMOS Progressive 5.0 MegaPixel
	Day / Night	Auto / Manual
	Max Resolution	2592x1944
	Focal Length	5 ~ 153 mm
	Focus Control	Auto / Manual
	Angle of View (H)	55.2° ~ 2.7°
	Angle of View (V)	42.4° ~ 2.0°
	Angle of View (D)	69.6° ~ 3.3°
	Optical Zoom	30x
	Digital Zoom	16x
	Aperture	F1.6 ~ F3.6
	Min. Illumination	Color:0.0005 lux @ F1.6, B/W:0.0001 lux@ F1.6, 0 lux with IR on
	Defog	Auto Defog
	Smart IR	Up to 50 m (Optional Up to 50 m White Light)
Detection	5 ~ 153 mm: Human (1.8m×0.5m) - 77 ~ 2295 m, Vehicle (1.4m×4.0m) - 235 ~ 7038 m	
Observation	5 ~ 153 mm: Human (1.8m×0.5m) - 30 ~ 911 m, Vehicle (1.4m×4.0m) - 93 ~ 2793 m	
Recognition	5 ~ 153 mm: Human (1.8m×0.5m) - 15 ~ 459 m, Vehicle (1.4m×4.0m) - 47 ~ 1408 m	
Identification	5 ~ 153 mm: Human (1.8m×0.5m) - 8 ~ 230 m, Vehicle (1.4m×4.0m) - 23 ~ 704 m	
VIDEO	Video Compression	H.265, H.264
	Frame Rate	Main Stream: Thermal: (1920×1080, 1280×1024, 1024×768) @25/30fps; Visible: (2592×1944, 2688×1520, 2560×1440, 1920×1080)@25/30fps; Sub Stream: Thermal: (1024×768, 640×512, 320×256) @25/30fps; Visible: (1920×1080, 1280×720, 704×480, 352×240) @30fps, (1920×1080, 1280×720, 704×576, 352×288) @25fps
	Stream Settings	i-Frame, PAL/NTSC, Frame Rate
	EIS	Supported
	Video Bit Rate	1.28 Mbps ~ 12.8 Mbps
	Bitrate Type	CBR, VBR
	Image Settings	Brightness, Contrast, Saturation, Sharpness, Mirror, Exposure, Day/Night
	White Balance	Auto, Indoor, Outdoor, Single Trigger, Manual, Day/Night, Sodium Lamp Mode
	OSD Type	Title, Week, Date, Time, Text with different colors and adaptable sizes (Small / Medium / Big), Image overlay
	ROI	Up to 8 regions
AUDIO	Privacy Mask	Up to 4 regions
	Audio Compression	G.711A, G.711U, PCM_AAC
	Audio Bit Rate	256 Kbps
SMART	Audio I/O	1/1
	Behaviour Detection	Thermal/Visible: Intrusion (Perimeter), Crossline (Tripwire)
	Intelligent Identification	Thermal: Flame Detection, Flame Point Detection
	Statistical Analysis	Thermal: Human, Vehicle & Animal Detection
	Alarm Notification	E-mail (Notification & Snapshot), HTTP (Alarm icon), FTP (Snapshot & Recording), SD Card (Recording)
TEMPERATURE	Auto Tracking	Supported
	Detection Mode	Spot, Line, Area (Total 20 Rules)
	Alarm	Over/Difference Alarm
	Accuracy	±2°C / ±2%
	Response Time	≤ 10ms
INTERFACE	Measurement Range	-20°C ~ 550°C (-4°F ~ 1022°F)
	Protocols	TCP/IP, IPv4, HTTP, HTTPS, FTP, SMTP, UPnP, DNS, DDNS, NTP, RTSP, RTCP, RTP, UDP, IGMP, ICMP, DHCP
	Security	IP Filter, User Authentication, HTTPS Authentication, User Access Log
	Compatibility	ONVIF(Profile S, G), SDK
	Network	1x RJ45 10M/100M Self Adaptive Ethernet Port
	Serial Interface	1xRS485
	Edge Storage	Micro SD Card Slot, Up to 256 GB
	Alarm I/O	1/1
	Remote Connection	≤8
	Max.User	32

★Product specification and availability are subject to change without notice.

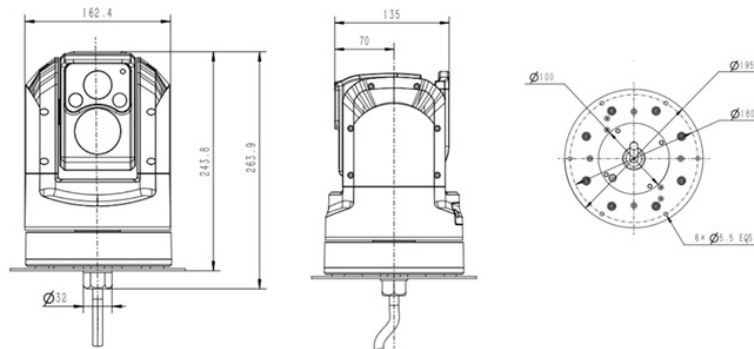
# IP DUAL SENSOR THERMAL PTZ CAMERA



## ENC-HPT8Z-30X-05

<b>MODEL</b>	<b>Model No.</b>	<b>ENC-HPT8Z-30X-05</b>
	<b>Type</b>	IP DUAL SENSOR THERMAL PTZ CAMERA
<b>PAN AND TILT</b>	<b>Pan Range</b>	0° ~ 360° (Endless)
	<b>Pan Speed</b>	Pan Manual Speed: 0.05°~ 80°/s, Pan Preset Speed: 80°/s
	<b>Tilt Range</b>	-15° ~ +90°
	<b>Tilt Speed</b>	Tilt Manual Speed: 0.0.5° ~ 60°/s, Tilt Preset Speed: 60°/s
	<b>Preset Accuracy</b>	± 0.1°
	<b>Number of Preset</b>	1024
	<b>3D Position</b>	Supported
	<b>Power off Memory</b>	Supported
<b>GENERAL</b>	<b>PTZ Mode</b>	8 Tour
	<b>Power Supply</b>	10 ~ 24V DC Wide Voltage
	<b>Max. Power Consumption</b>	≤36W
	<b>Working Temperature</b>	-20 °C ~ 60 °C
	<b>Working Humidity</b>	≤90% RH
	<b>Ingress Protection</b>	IP66
	<b>Dimensions</b>	243.8x162.4x135mm
	<b>Weight</b>	3 Kg

Dimension Unit : mm



★Product specification and availability are subject to change without notice.

# IP DUAL SENSOR THERMAL PTZ CAMERA



**ENC-HPT8Z-30X-05**

## ORDERING INFORMATION

Part Number	Description	Standard Quantity
ENC-HPT8Z-30X-05 (With 9 mm Thermal Lens and 50m IR)	5MP IP Dual Sensor Temperature Detection Thermal PTZ Camera with Visible Lens of 30X Optical Zoom and Thermal Imaging Camera with 640*512 Thermal Resolution, 50m IR and SD Card Slot Support	1
ENC-HPT8Z-30X-05 (With 13 mm Thermal Lens and 50m IR)	5MP IP Dual Sensor Temperature Detection Thermal PTZ Camera with Visible Lens of 30X Optical Zoom and Thermal Imaging Camera with 640*512 Thermal Resolution, 50m IR and SD Card Slot Support	1
ENC-HPT8Z-30X-05 (With 25 mm Thermal Lens and 50 m IR)	5MP IP Dual Sensor Temperature Detection Thermal PTZ Camera with Visible Lens of 30X Optical Zoom and Thermal Imaging Camera with 640*512 Thermal Resolution, 50m IR and SD Card Slot Support	1
ENC-HPT8Z-30X-05 (With 9 mm Thermal Lens and 50 m White Light)	5MP IP Dual Sensor Temperature Detection Thermal PTZ Camera with Visible Lens of 30X Optical Zoom and Thermal Imaging Camera with 640*512 Thermal Resolution, 50 m White light and SD Card Slot Support	1
ENC-HPT8Z-30X-05 (With 13 mm Thermal Lens and 50 m White Light)	5MP IP Dual Sensor Temperature Detection Thermal PTZ Camera with Visible Lens of 30X Optical Zoom and Thermal Imaging Camera with 640*512 Thermal Resolution, 50 m White Light and SD Card Slot Support	1
ENC-HPT8Z-30X-05 (With 25 mm Thermal Lens and 50 m White Light)	5MP IP Dual Sensor Temperature Detection Thermal PTZ Camera with Visible Lens of 30X Optical Zoom and Thermal Imaging Camera with 640*512 Thermal Resolution, 50 m White Light and SD Card Slot Support	1

## PACKING INFORMATION

Part Number	Packing Mode	Gross weight(Kg)	Dimension(mm)
ENC-HPT8Z-30X-05	Carton Box	-	-

★Product specification and availability are subject to change without notice.