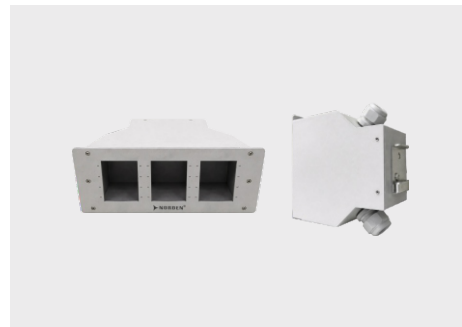


DIN RAIL MOUNTED FIBRE OPTIC TERMINAL BOX

NORDEN DIN Rail-Mounted Fibre Optic Terminal Box is a compact fibre management enclosure designed for installation inside control cabinets, or telecom racks. It provides a secure and organized termination point for optical fibres, enabling splicing, termination, and distribution in industrial and commercial environments.



* Product picture for reference only.

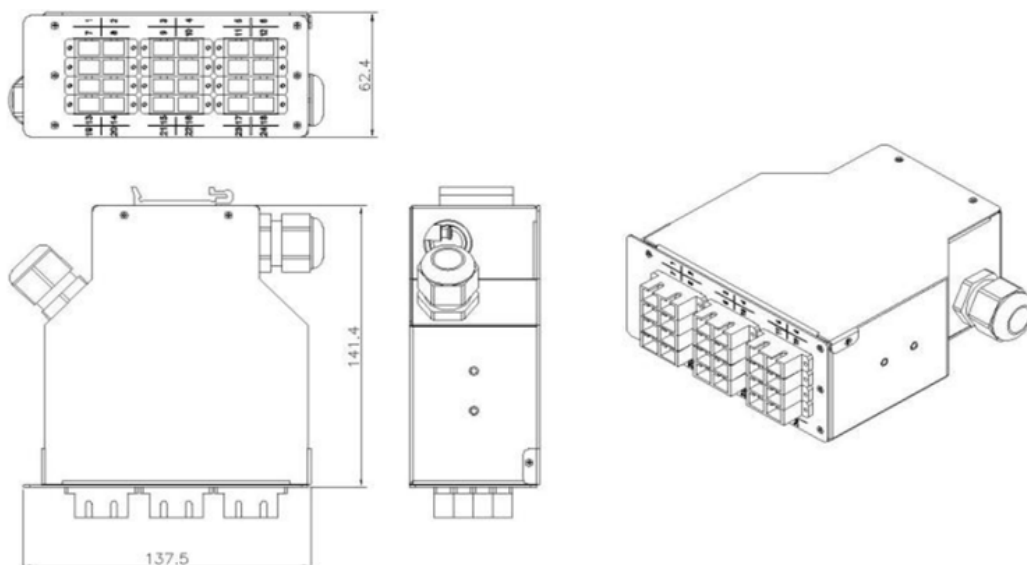
FEATURES

- Compact, lightweight aluminium enclosure
- Electrostatic powder-coated finish in grey or black
- DIN-rail mounting with aluminium clip (right, left, or rear position)
- 4 cable entry points: 2 with PG16 glands and 2 spare, suitable for cables up to 12 mm
- 4 fibre splice trays, each supporting 12 splice sleeves (total 48 splices)
- 12 SC duplex adaptor ports as standard, other adaptor port available

MATERIAL & SPECIFICATIONS

Material	Aluminium
Thickness	1.2mm
Dimension	137.5x141.4x62.4mm
Adaptor Port Position	12
Splicing Capacity	SC: 24F LC: 48F
Cable Ports	4
Application	DIN Rail Mounted
Supported Adaptor Type	SC Duplex & LC Quad with Flange

DRAWING



DIN RAIL MOUNTED FIBRE OPTIC TERMINAL BOX

DEFAULT ACCESSORIES

Item	Name	Specifications	Unit	Qty
1	Heat Shrinkable Protection Sleeves	45*2.6*1.2mm	Pcs	As per using capacity
1	Cable Tie	3*120mm White	Pcs	4

ORDERING INFORMATION

Part Number	Description	Dimension (mm)
626-2SC012X	12 Port SC Duplex DIN Rail Fibre Optic Terminal Box	137.5x141.4x62.4
626-4LC012X	12 Port LC Quad DIN Rail Fibre Optic Terminal Box	137.5x141.4x62.4

*Adaptor and Pigtailed need to be quoted separately and please find the below mentioned links.

FIBRE ADAPTOR

<https://www.nordencommunication.com/pdf?pdf=/public/uploads/datasheet/datasheet-165-sc-fibre-optic-adaptor.pdf>

<https://www.nordencommunication.com/uploads/datasheet/datasheet-171-lc-fibre-optic-adapter.pdf>

FIBRE PIGTAIL

<https://www.nordencommunication.com/pdf?pdf=/public/uploads/datasheet/datasheet-153-fibre-pigtail.pdf>

<https://www.nordencommunication.com/uploads/datasheet/datasheet-160-lc-fibre-pigtail.pdf>