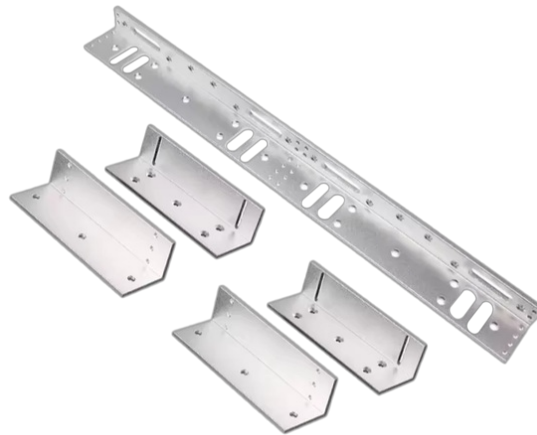


NAC-6008LZ

LZ Bracket for Double Door 280Kg Locks



DESCRIPTION

The NAC-6008LZ is a LZ bracket set designed for mounting Double Door 280Kg Electromagnetic Locks. It is made from high-quality aluminium alloy with a frosted and sprayed surface for enhanced durability and aesthetics. The bracket supports various door types and offers a stable, secure installation.

APPLICATION

Office areas, schools, communities, office buildings, hotels, shopping malls, shops, public service places, etc.

FEATURES

- Made of Aluminium alloy with Frosted finish
- Stable performance, Sturdy and Durable
- Multiple usage methods for flexible installation
- Suitable for doors with Flush or Recessed frames

TECHNICAL PARAMETERS	
Model	NAC-6008LZ
Material	High-strength Aluminum Alloy
Open Mode	90 Degree Door
Suitable for Door	Wooden, Metal, and Glass doors
Operating Temperature	-30°C to +60°C

ORDERING INFORMATION

Part Number	Description
NAC-6008LZ	LZ Bracket for Double Door 280Kg Locks