

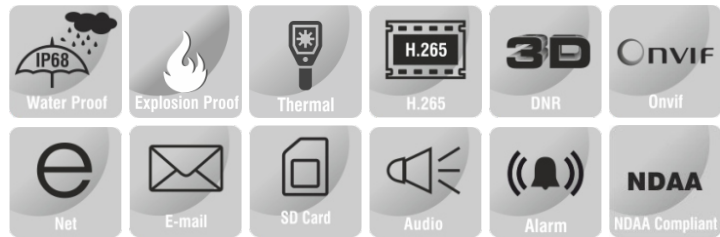
IP EXPLOSION PROOF THERMAL PTZ CAMERA



ENC-HPT8Z-33X-23

FEATURES

- 304 / 316L Stainless Steel Construction
- 640x512/ 400x300 Thermal Resolution
- ONVIF Profile (S, G, T, M)
- ATEX/ IECEx/ CCoE (PESO) Certified
- Applicable for GAS Zone 1, Zone 2, Class IIA, IIB, IIC
- Applicable for Temperature Classes T1-T6
- Applicable for Dust Zone 21, 22
- PoE++, IP68



SPECIFICATION

MODEL	Model No.	ENC-HPT8Z-33X-23								
	Type	IP EXPLOSION PROOF THERMAL PTZ CAMERA								
THERMAL CAMERA	Detector Type	Uncooled VOx Focal Plane Arrays								
	Effective Pixels	640x512 and Image can be scaled up to 1280x1024 (400x300 and Image can be scaled up to 704x576)								
	Pixel Size	12um (640x512) / 17um (400x300)								
	Thermal Sensitivity (NETD)	≤40 mK								
	Spectral Range	8~14um								
	Image Setting	Brightness, Sharpness, Contrast, Mirror, 3D DNR, Mirror / Flip, FFC								
	Color Palettes	White & Black Hot, Ironbow, Rainbow etc. up to 17 modes								
	Iris	Auto Fixed IRIS								
THERMAL LENS	Lens	Fixed								
	Focus Control	Motorized Focus								
	Focal Length	25/50/75/100 mm								
	F No.	1.0								
	Angle of View (640x512)	25mm	50mm		75mm		100mm			
		17.0°(H), 14.0°(V)	8.0°(H), 7.0°(V)		6.0°(H), 5.0°(V)		4.3°(H), 3.5°(V)			
	Thermal imaging★	Object	Human (1.8m x 0.5m)				Vehicle (4.0m x 1.5m)			
		Lens(mm)	25	50	75	100	25	50	75	100
		Detection(m)	1040	2081	3121	4161	3194	6389	9583	12778
		Recognition(m)	260	520	780	1040	799	1597	2396	3194
		Identification(m)	130	260	390	520	399	799	1198	1597
	Fire Detection	Object	Fire (1.0m x 1.0m)							
Lens(mm)		25		50		75		100		
Detection(m)		1042		2083		3125		4167		

★Product specification and availability are subject to change without notice.

★The detection ranges may vary in different conditions. Product performance is based on testing in a controlled environment. Results may vary due to several external and environmental factors.

IP EXPLOSION PROOF THERMAL PTZ CAMERA



ENC-HPT8Z-33X-23

MODEL	Model No.	ENC-HPT8Z-33X-23								
	Type	IP EXPLOSION PROOF THERMAL PTZ CAMERA								
THERMAL LENS	Angle of View (400x300)	25mm		50mm		75mm		100mm		
		15.4°(H), 11.6°(V)		7.7°(H), 5.8°(V)		5.1°(H), 3.8°(V)		3.8°(H), 2.3°(V)		
	Thermal imaging★	Object	Human (1.8m x 0.5m)				Vehicle (4.0m x 1.5m)			
		Lens(mm)	25	50	75	100	25	50	75	100
		Detection(m)	735	1471	2206	2941	2255	4510	6765	9020
		Recognition(m)	184	368	551	735	564	1127	1691	2255
	Fire Detection	Object	Fire (1.0m x 1.0m)							
		Lens(mm)	25		50		75		100	
		Detection(m)	735		1471		2206		2941	
		Recognition(m)	184		368		551		735	
VIDEO	Video Compression	Enhanced(H.265,H.264), H.265, H.264								
	Frame Rate	Main Stream:(1280x1024,1280x720, 640x512) @ 25fps, (Optional: 704x576 @ 25/30fps) Sub Stream: (704x576, 352x288) @25fps, (Optional: 352x288) @ 25/30fps								
	Stream Settings	i-Frame, PAL/NTSC, Frame Rate, SVC								
	EIS	Supported								
	Video Bit Rate	100Kbps ~ 8 Mbps, (Optional 10Kbps ~ 6Kbps)								
	Bitrate Type	CBR, VBR								
	OSD	Up to 8 regions								
	OSD Type	Title, Week, Date, Time, Text with different colors and adaptable sizes (Small / Medium / Big), Image overlay								
	Privacy Mask	Up to 4 regions								
	Audio Compression	G.711U, G.711A, RAW_PCM								
AUDIO	Audio I/O	1/1								
	Audio Bit Rate	64Kbps, 128Kbps								
	Behaviour Detection	Intrusion (Perimeter), Crossline (Tripwire), Double Crossline (Double Tripwire)								
SMART	Intelligent Identification	Loitering, Region Entry / Exit Detection, Flame Point Detection								
	Statistical Analysis	People Counting, Wrong Way Detection, Human and Vehicle Detection, Temperature Detection								
	Alarm Management	Motion Detection, Tampering Alarm, Disk Full Alarm, Temperature Alarm, Input / Output Alarm, Network Alarm								
	Alarm Notification	E-mail (Notification & Snapshot), HTTP (Alarm icon), FTP (Snapshot & Recording), SD Card (Recording)								
TEMPERATURE	Detection Mode	Spot, Line, Area								
	Alarm	Over/Difference Alarm								
	Accuracy	±2°C / ±2%								
	Response Time	≤30ms								
	Measurement Range	Mode1: -20°C ~ 150°C Mode2: 150°C ~ 900°C (±0.2°C accuracy up to 15M and ±15-20% accuracy up to 50M)								
INTERFACE	Protocols	TCP/IP, UDP, IPv4, IPv6, ICMP, HTTP, HTTPS, FTP, DHCP, DNS, DDNS, RTP, RTSP, RTCP, PPPoE, NTP, UPnP, SMTP, IGMP, 802.1X, Unicast, Multicast, QoS, ARP, SNMP, SSL/TLS1.2								
	Security	AES 128 / 256 Encryption, IP Filter, User Authentication (Multiple Privilege Level), 802.1X Authentication (EAP-MD5), HTTPS Authentication, RTSP Authentication, Digest Authentication, User Access Log								
	Compatibility	ONVIF (S, G, T, M), SDK, CGI								
	Network	1 x RJ45 10M/100M Self Adaptive Ethernet Port								
	Alarm I/O	1/1								
	Serial Interface	1xRS485								
	Edge Storage	Micro SD Card Slot, up to 512 GB								
	ANR	Supported								
	Built-in Heater	Supported(Optional)								
	Wiper	Supported								
Max. User	32									
Client Application	EyeGuard									

★Product specification and availability are subject to change without notice.

★The detection ranges may vary in different conditions. Product performance is based on testing in a controlled environment. Results may vary due to several external and environmental factors.

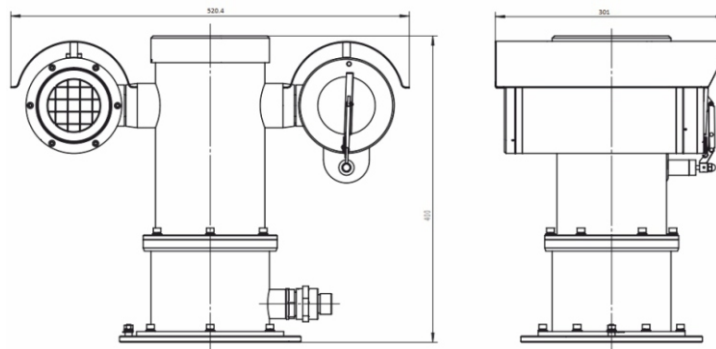
IP EXPLOSION PROOF THERMAL PTZ CAMERA



ENC-HPT8Z-33X-23

MODEL		ENC-HPT8Z-33X-23
Type		IP EXPLOSION PROOF THERMAL PTZ CAMERA
PAN AND TILT	Pan Range	0° ~ 360° (Endless)
	Pan Speed	Pan Manual Speed: 0.1°/s ~ 45°/s, Pan Preset Speed: 45°/s
	Tilt Range	-90 ~ +90°
	Tilt Speed	Tilt Manual Speed: 0.1°/s ~ 45°/s, Tilt Preset Speed: 45°/s
	Preset Accuracy	±0.1°
	Cruise Scan	Supported
	Preset	300
	Resume function	Supported
	Auto Cruise	Supported
	Auto Scan	Supported
GENERAL	Power Supply	AC 220V / AC 24V / DC 24V / PoE++ (IEEE 802.3bt-Type 4)
	Max Power Consumption	≤70W (with thermostat)
	Working Temperature	-40°C ~ 70°C
	Working Humidity	≤95% RH (non-condensing)
	Atmospheric Pressure	80 kPa ~ 110 kPa
	Window Glass	Strong tempered glass
	Sun Shade	Supported
	Ingress Protection	IP68
	Surge Protection	TVS6000V
	Reset Button	Supported
	Dimensions	520.4x301x400 mm
Net Weight	38 kg	

Dimension Unit : mm



★Product specification and availability are subject to change without notice.

★The detection ranges may vary in different conditions. Product performance is based on testing in a controlled environment. Results may vary due to several external and environmental factors.

IP EXPLOSION PROOF THERMAL PTZ CAMERA



ENC-HPT8Z-33X-23

ORDERING INFORMATION

Part Number	Description	Standard Quantity
ENC-HPT8Z-33X-23	IP SS316L (Optional SS304) Explosion-Proof Thermal PTZ camera with 640*512 (400*300 Optional) Thermal Resolution, 25mm (Optional 50, 75,100mm) Motorized Focus Thermal Lens and SD card slot Support	1
ENC-HPT8Z-33X-23-MOD	5MP Visible Camera Module with 33x Optical Zoom, SD Card Slot, and Smart Analytics	1
ENB-BZPW68	Wall Mount Bracket for Norden Explosion Proof PTZ Camera	1
ENB-BZPH68	Corner Mount Bracket for Norden Explosion Proof PTZ Camera	1
ENB-BZPV68	Pole Mount Bracket for Norden Explosion Proof PTZ Camera	1
ENA-EXH010	1 Meter Explosion Proof Hose for Norden Explosion Proof Camera	1
ENA-EXH015	1.5 Meter Explosion Proof Hose for Norden Explosion Proof Camera	1
ENA-EXH020	2 Meter Explosion Proof Hose for Norden Explosion Proof Camera	1

PACKING INFORMATION

Part Number	Packing Mode	Gross weight(Kg)	Dimension(mm)
ENC-HPT8Z-33X-23	Carton Box	-	-

★Product specification and availability are subject to change without notice.

★The detection ranges may vary in different conditions. Product performance is based on testing in a controlled environment. Results may vary due to several external and environmental factors.