

OPGW CABLE ACCESSORIES

Optical Fibre Ground Wire is an instrument used for communication and surge protection in transmission lines. ADSS Accessories include Tension Assembly (Clamp), Suspension Assembly (Clamp), Vibration Damper, Down Lead Clamp, Parallel Glove Clamp (PG Clamp) Optical, and Outdoor Splicing Box (Closure).

OPGW CABLE SUSPENSION ASSEMBLY:

Assembly with reinforced suspension clamp and neoprene inner covering, especially designed for OPGW cables. Includes grounding clamps for tower connection.

TECHNICAL SPEC

AL-Layer	External aluminum alloy 94.54%, Internal aluminum clad steel 10%
Breaking Load	100KN
Short Circuit Current	≥25.9kA(24 Core & 48 Core), ≥28.97kA (96 Core)
Material	Aluminum Alloy + aluminum Clad Steel + Galvanized Steel
Weight	6KG



ORDERING INFORMATION

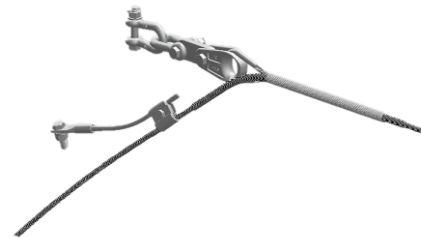
Part Number	Description
OPGW-A1S-24	OPGW Cable Suspension Assembly - 24 Core
OPGW-A1S-48	OPGW Cable Suspension Assembly - 48 Core
OPGW-A1S-96	OPGW Cable Suspension Assembly - 96 Core

OPGW CABLE DEAD END TENSION ASSEMBLY:

Tension assemblies for suspension towers: splicing tension assembly, for towers with joint boxes. The assembly components can be provided with customized features in accordance with Client requirements.

TECHNICAL SPEC

Breaking Load	120KN
Minimum Failing Load at Dead end	120KN
Short Circuit Current	≥25.9kA(24 Core & 48 Core), ≥28.97kA (96 Core)
Material	Aluminum Clad Steel + Galvanized Steel
Weight	8.8KG



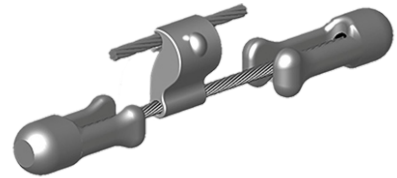
ORDERING INFORMATION

Part Number	Description
OPGW-A1T-24	OPGW Cable Dead End Tension Assembly - 24 Core
OPGW-A1T-48	OPGW Cable Dead End Tension Assembly - 48 Core
OPGW-A1T-96	OPGW Cable Dead End Tension Assembly - 96 Core

OPGW CABLE ACCESSORIES

OPGW CABLE VIBRATION DAMPER:

Install on the conductor and earth wire to decrease the wind vibration, protect the conductor, and earth wire, and fitting, prolong the system's life.



ORDERING INFORMATION

Part Number	Description
OPGW-A1V-24	OPGW Cable Vibration Damper - 24 Core
OPGW-A1V-48	OPGW Cable Vibration Damper - 48 Core
OPGW-A1V-96	OPGW Cable Vibration Damper - 96 Core

OPGW CABLE DOWN LEAD CLAMP:

A download clamp is used for fiber optical cable terminal and following-tower area, fix the fiber optic cable on the pole downleading from pole and tower.



TECHNICAL SPEC

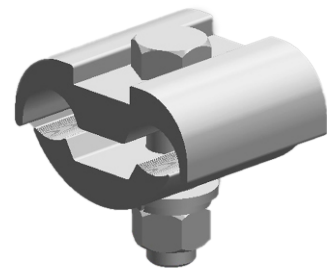
Tightening torque [M12]	45N.M
Min Average Thickness of Zinc Coating	75µm, Bolts and nuts 45µm

ORDERING INFORMATION

Part Number	Description
OPGW-A1L-24	OPGW Cable Down Lead Clamp - 24 Core
OPGW-A1L-48	OPGW Cable Down Lead Clamp - 48 Core
OPGW-A1L-96	OPGW Cable Down Lead Clamp - 96 Core

OPGW CABLE PARALLEL GROOVE CLAMP:

Parallel groove clamp (PG Clamp) is designed to connect two conductors in parallel and especially used to hold transmission conductors in parallel in transmission lines.



TECHNICAL SPEC

Tightening torque	20 ~ 25 Nm for M10 Full Thread Bolt
-------------------	-------------------------------------

ORDERING INFORMATION

Part Number	Description
OPGW-A1H-24	OPGW Cable Vibration Damper - 24 Core
OPGW-A1H-48	OPGW Cable Vibration Damper - 48 Core
OPGW-A1H-96	OPGW Cable Vibration Damper - 96 Core

OPGW CABLE ACCESSORIES

OPGW JOINT ENCLOSURE IP66:

Suitable for the end of cable. Make the cable connect the tail optical fiber, also protect the splice.



TECHNICAL SPEC

Joint Box Material	Aluminum Alloy
Joint Box Cover	Aluminum Alloy
Bracket Material	Aluminum Alloy
IP Rating	IP66

ORDERING INFORMATION

Part Number	Description
OPGW-A1G-24	24 Core OPGW Joint Enclosure IP66
OPGW-A1G-48	48 Core OPGW Joint Enclosure IP66
OPGW-A1G-96	96 Core OPGW Joint Enclosure IP66