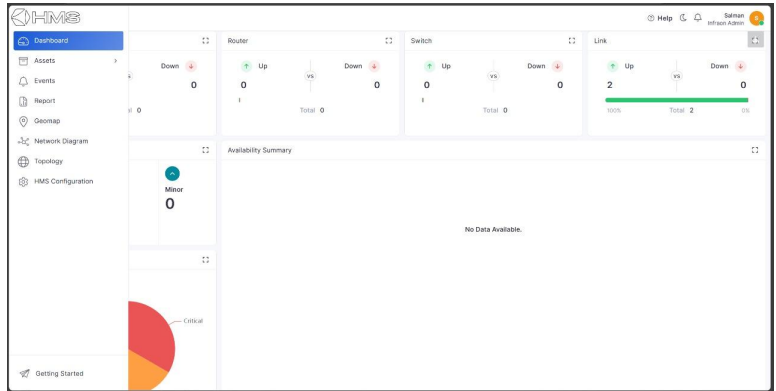


ENS-HMS

FEATURES

- _____ Fault Management
- _____ Performance Management
- _____ Inventory Management
- _____ SLA Management
- _____ Configuration Management
- _____ VSAT and RF management
- _____ Event and Alarm Management
- _____ Event Correlation, Notification
- _____ Syslog Management
- _____ Information and Customizable Reports



SPECIFICATION

| MODEL | Model No. | ENS-HMS |
|---------|-------------------------------|---|
| | Type | HEALTH MANAGEMENT SOFTWARE |
| GENERAL | Type | Norden Health Management software |
| | Installation OS Support | Linux, Windows OS, Virtual Machine |
| | Database | MSSQL, MY SQL, Linux database |
| | Monitoring OS Support | Windows, Linux, Netware, Domino |
| | Security | Default page viewed when the user logs in Restrict the view of the HMS system based on the kind and configuration of the user Multiple Ac |
| | Centralized Management | Monitoring profiles and monitoring locations. View and control the process of the remote sites monitor the status of all the remote sites |
| | Discover Management | IP Camera (Down-UP-reboot-not reachable alert) Workstation/Router/NVR (Down-UP-reboot-not reachable alert) |
| | Alert Notification Management | <ul style="list-style-type: none"> · Multi level escalation of alerts · Escalation of alert up to 5 user level for configured time frame. · Multilevel emails based on escalated alerts. · Send alert happened via E-mail, Direct SMS, · Metrics with threshold can also be specified that once it is reached, a notification can also occur. · Notification mechanism that allows administrator to define what notification channel to be used in different time of days, and able to trigger multiple notifications \ to alert multiple person and actions. · Set and generate different alerts for Server related errors and timeouts. · Set and generate different alerts for Network link related errors and timeouts. |
| | Dashboard Views | <ul style="list-style-type: none"> · Multiple pre configured and customizable dash board. · Tree structure design with multiple folder drill down option. · User configurable folder name to any specified Name, location or node. · Easy to configure user interfaces to view specific data |

ENS-HMS

Dimension Unit : mm

ORDERING INFORMATION

| Part Number | Description | Standard Quantity |
|----------------|---|-------------------|
| ENS-HMS-Base | Norden Health Management Base Software | |
| ENS-HMS-UR01 | Norden Health Management User License | None |
| ENS-HMS-SR01 | Norden Health Management Service License | None |
| ENS-HMS-CH01 | Norden Health Management Channel License - 01 Channel | None |
| ENS-HMS-CH05 | Norden Health Management Channel License - 05 Channel | None |
| ENS-HMS-CH10 | Norden Health Management Channel License - 10 Channel | None |
| ENS-HMS-CH25 | Norden Health Management Channel License - 25 Channel | None |
| ENS-HMS-CH50 | Norden Health Management Channel License - 50 Channel | None |
| ENS-HMS-CH100 | Norden Health Management Channel License - 100 Channel | None |
| ENS-HMS-CH250 | Norden Health Management Channel License - 250 Channel | None |
| ENS-HMS-CH500 | Norden Health Management Channel License - 500 Channel | None |
| ENS-HMS-CH1000 | Norden Health Management Channel License - 1000 Channel | None |